



900 Paseo de la Cuma

\$1,795,000

KNOWING SANTA FE

Art Lover's Oasis

Sunset, city lights and Sangre de Cristo views, quintessential Santa Fe style elements, rare antique details, custom faux finishing, and plentiful windows and skylights create a one-of-a-kind atmosphere in this "Plaza walkable" Northside home, which combines two residences in one unique 4,661-square-foot haven perfect for grand indoor-outdoor entertaining and quiet private relaxation year-round. Two great rooms-each adjoined by its own distinctive, well-equipped kitchen-allow for gatherings large or small, elegantly formal or festively casual. Generous, restful bedrooms and baths for owners and guests are provided and thoughtfully secluded. Thanks to expansive walls and museum-quality lighting, many rooms are ideal for collecting, displaying, and appreciating an extensive art collection. Multiple portales, terraces, and courtyards with colorful plantings, mature trees, professional landscape lighting, and an irrigation system envelop the home, allowing for effortless enjoyment of Santa Fe's fresh air, sunshine, and sparkling night skies. A two-car garage with storage space joins two driveways in accommodating multiple cars. A state-of-the-art security system provides peace of mind.

Tim Van Camp
John Rigatti

seller's representatives

tim 505.690.2750
john 505.660.3353

231 Washington Ave.
Santa Fe, NM 87501
505.988.8088

info@knowingsantafe.com
<http://www.knowingsantafe.com>

Sotheby's
INTERNATIONAL REALTY

Property

On a cul-de-sac in a secluded, quiet community just north of downtown Santa Fe and the Plaza, this property occupies an enviable hillside spot strewn with mature native trees and foliage. Its multiple courtyards have been colorfully landscaped; one is accented by a 1,500-year-old Roman mosaic, while another includes an outdoor kitchen and space for a hot tub. A west-facing portal is a perfect perch for enjoying rosy western sunsets.



Residence

Quintessential Santa Fe style and precious antique elements combine in a one-of-a-kind ambience in this Northside home, which unites two residences in one unique haven perfect for indoor-outdoor entertaining and quiet private relaxation. Two great rooms—each adjoined by its own distinctive, well-equipped kitchen—allow for elegantly formal or festively casual gatherings. Generous, restful bedrooms and baths are thoughtfully secluded in each of the spacious wings. Expansive walls and museum-quality lighting make the home an ideal venue for displaying and appreciating a wide variety of artwork.



Entry Courtyard

A custom-designed and -crafted gate opens from a parking area and the cul-de-sac to an idyllic courtyard with brick paths, mature aspens, colorful flowers, and native grasses. A nearby portal creates an informal entrance in the charming Santa Fe–style kitchen, while terrace space continues toward the formal entrance, offering elegant sitting areas with a Roman mosaic wall, built-in bancos, and a brick-paved portal at the formal entryway.



Portal - Entry

Near the entrance to the central courtyard is this cool, breezy portal accented with colorful hand-painted details. A screened door opens to the colorful Santa Fe–style kitchen.



Foyer

Beneath a tall skylit ceiling of latillas and beams, this small charming foyer includes a coat closet and serves as an auxiliary entrance to the home—or simply this wing of it, if desired—through antique hand-carved wood doors.



Kitchen

Cheerful, warm, and inviting, the home's delightful second kitchen radiates the color and charm of Santa Fe. Vibrant ceramic tile accents the backsplashes and counters, including the center island. A corner kiva fireplace contributes to the welcoming warmth, while a glass door opens to the rear portal and another opens to a breezy outdoor spot overlooking the entry courtyard and gardens.



Living Room

Exuding classical Santa Fe style, this magnificent space has soaring ceilings with beams, corbels, and clerestories; herringbone-patterned brick flooring; and an anchoring dramatic kiva-inspired fireplace with a media cabinet. Glass doors give way to an impressive portal, facilitating indoor-outdoor entertaining.



Portal

Running along an entire side of the home, this roomy west-facing portal is the perfect location for relaxing, enjoying cool breezes and views, or entertaining alfresco.

Beams, latillas, corbels, and a classic stuccoed wall help create an undeniable Santa Fe vibe.



Upper Bedroom

The centerpiece of this restful space is a unique built-in headboard that includes lighting and bedside tables, which is ringed with windows offering views of the treed property. Along the back wall are several useful closets, while another wall is dedicated to built-in bookshelves.



Sunroom

Wrapped in windows and glass doors, this inspiring light-flooded space links the sitting room and bedroom and opens to a private walled courtyard. A hidden laundry closet is located here as well.



Bathroom

This spacious bath also offers a generous vanity with a large mirror and cosmetic lighting; faux-finished walls and the subdued ceramic tile of the tub shower create a unique, calming palette.



Courtyard - Patio

Yet another ideal spot for outdoor relaxation or enjoyment, this spacious courtyard is paved in handsome brick and enjoys sunny spots as well as areas of shade thanks to enveloping trees.



Guest Room

In the formal foyer, a small set of stairs with a decorative iron railing rises to carved wooden doors with Renaissance-style frescoes that give way to a sunny guest room that is the introductory piece of the second residence. This calm, quiet brick-floored space offers numerous spots for relaxing and reading as well as a thoughtful closet, a wide south-facing window, built-in bookshelves, and access to a shared bath.



Bathroom

Shared by the guest room and the sunroom, this striking bath is accented by dramatic ceramic tile with an earthy hue and features a spacious vanity with cosmetic lighting and a sunken open step-in shower.



Formal Front Courtyard



Formal Foyer

Stately antique Moroccan and Mexican mesquite doors create a fittingly dramatic introduction to the formal wing of the home, opening to a skylit foyer with vigas, latillas, a convenient coat closet with hand-painted antique doors, and access to a serene secret courtyard garden and patio.



Hallway

Handsome brick steps with ornamental iron railings, numerous nichos, and colorful hand-painted details create a unique air in this hallway, which links the formal foyer with the grand living and entertaining spaces.



Powder Bath

Warm and elegant, the home's powder room enjoys a discreet spot up a few stairs from the formal entertaining spaces. Spacious faux-finished walls add color and create a unique milieu for displaying a variety of artwork.



Guest Room - Study

Antique Moroccan doors in a soothing gray-blue hue open from the hallway to this comfortable, relaxing space, which features eye-catching bamboo floors, a built-in plaster perch for a television or monitor, a glass door opening to a secluded courtyard, and a discreet bath.



Bathroom

Tucked off the guest/study room, this stylish, spacious, convenient bath boasts soaring ceilings, striking granite counters and walls, an oversized mirror, and a tub shower.



Living Room

Boasting stone floors and a soaring beamed ceiling with museum-quality lighting, the regal living room seems destined for sophisticated gatherings amid walls of built-in bookshelves and a marble and stone gas fireplace with antique Philippine ironwood elements. Clerestories and a wide window in the adjoining dining room admit a lovely natural glow.



Dining

Open to the living area, the formal dining area is ideal for festive feasts day or night.

Oversized windows admit wonderful natural light, while double screened wood doors carved in a Pueblo-style “clouds and rain” theme give way to a terrace and a courtyard with a grilling area and a hot tub. A sleek modern kitchen is steps away.



Portal and Courtyard

The site of many a festive alfresco gathering, this sunny east-facing courtyard gazes toward the Sangre de Cristos and offers spots for lounging beneath sun and stars, an extensive open-air grilling area with a sink and burners, and space for a soothing hot tub.



Kitchen

Behind a pocket door and beneath a large skylight and an artful Italian Artemide light fixture, this sleek, stylish modern kitchen is equipped with streamlined cabinetry, generous granite countertops, and top-tier stainless-steel appliances from KitchenAid, Bosch, and Fisher & Paykel.



Laundry Room

Steps rise to a windowed landing that leads to the primary suite. Hidden behind a paneled wood door is the convenient laundry room, which is equipped with high-quality equipment, granite countertops, space for wine storage, and useful cabinetry.



Hallway

Cool, serene, and elegant, the primary bedroom is hidden at the top of cork stairs and behind double antique wood doors.



Primary Bedroom

Cool blue walls contribute to the restful ambience, while numerous windows admit a soothing glow, and a corner fireplace has been converted into a spot for media. A screened door with Native-themed woodwork opens to a small stoop off the rear courtyard, providing an ideal, easily accessed outdoor space for furry friends.



Bathroom

A regal stone threshold introduces the primary bath, a spa-like space with two generous granite-topped vanities, flattering lighting, louvered folding-door closets, and a private water closet, a soaking tub, and a corner shower illuminated by glimmering glass block walls.



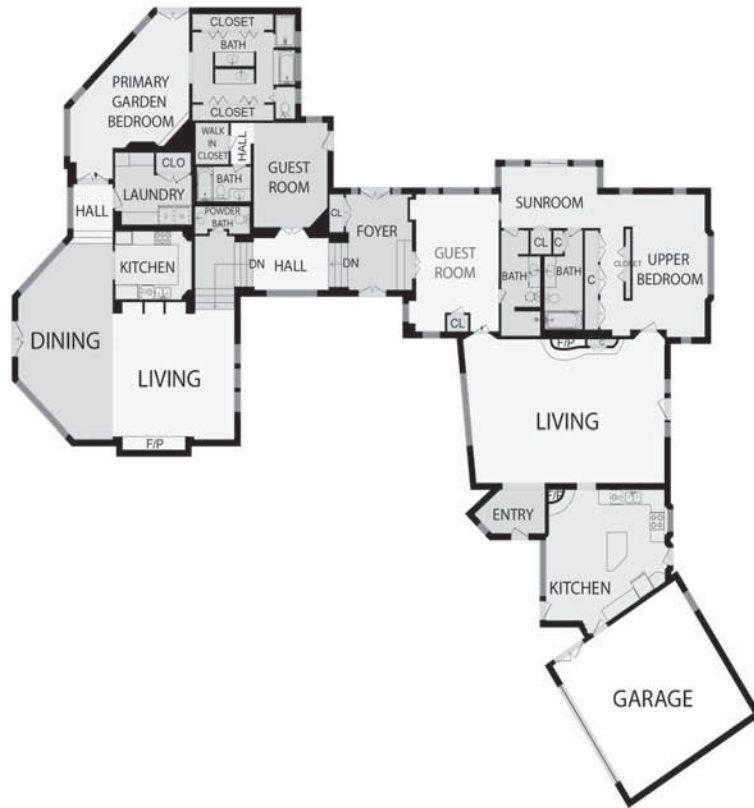
Garage

Just off the cul-de-sac and short driveway is the home's two-car garage, which is windowed and equipped with overhead lighting, pegboard, and storage cabinets.



Floor Plan

900 Paseo De La Cuma, Santa Fe, NM



0 8 16
ft

PREPARED: 2023/11/02



White regions are excluded from total floor area in iGUIDE floor plans. All room dimensions and floor areas must be considered approximate and are subject to independent verification.

iGUIDE

Property Detail

property summary	
bedrooms	3
bathrooms	3 full 1 three-quarter 1 half
garage	2-car attached
square footage	4,661 ft ²
acreage	0.586 acres
year built	1989
style	pueblo
roof	flat
construction	block, frame, stucco
foundation	slab
heating system	gas natural
heating distribution	forced air, mini splits
cooling system	refrigerator, ductless a/c
cooling distribution	forced air, mini splits
flooring	brick, tile
gas	natural
water	city
electric	public
sewage	city
taxes	\$6,033.24 in 2023
mls number	202342073

No representations or warranties either express or implied are made as to the accuracy of the information herein or with respect to the usability, feasibility or condition of the property. Subject to change, sale or withdrawal without prior notice of any kind.