



3295 Monte Sereno Drive

\$4,495,000

KNOWING SANTA FE

Dramatic Contemporary Home in Monte Sereno

Perched on one of Monte Sereno's most desirable lots, this new contemporary home by Dressel Construction offers breathtaking Sangre de Cristo views from nearly every room. Walls of glass fill the stylish spaces with natural light and blur the line between indoors and out. The open floor plan provides an effortless flow for daily living and entertaining. At the heart of the home is a great room with a grand living area, dining room, contemporary gas fireplace, well-equipped wet bar, and a kitchen with superior appliances, counter seating, a breakfast nook, a scullery with a walk-in pantry, and ample storage. An office or library and a chic media room share a quiet wing with a powder room and a peaceful, private guest suite with a walk-in closet, luxurious bath, and mountain-view portal. The owner's suite is a secluded oasis with a lavish bath, two walk-in closets, and dedicated outdoor spaces. An additional room and bath adjoin the owner's suite and could serve as an office or additional guest suite. A mudroom with sliding glass doors leads to the spacious three-car garage. A photovoltaic solar system featuring sixteen 400W PV panels promotes a more sustainable lifestyle and minimal electric bills.

Tim Van Camp
John Rigatti

seller's representatives

tim 505.690.2750
john 505.660.3353

231 Washington Ave.
Santa Fe, NM 87501
505.988.8088

info@knowingsantafe.com
<http://www.knowingsantafe.com>

Sotheby's
INTERNATIONAL REALTY

Property

The residence is surrounded by tasteful new landscaping, an inviting entry courtyard with a dramatic pivoting metal gate, and a series of portales, all with a majestic backdrop offered by the Sangre de Cristo Mountains.

Making the most of the spectacular scenery, the home's outdoor spaces offer room for grilling living, dining, entertaining, or relaxed lounging.

The coveted community of Monte Sereno is located in the rarefied environs of Santa Fe's northside, near the world-renowned Santa Fe Opera and a short drive from the historic Plaza. The walled drive and motor court offers ample space for guest parking.



Residence

Perched high on one of Monte Sereno's most desirable lots, this new contemporary home—the work of Dressel Construction—basks in breathtaking Sangre de Cristo views from nearly every room. Walls of glass fill the stylish spaces with glorious natural light during the day and blur the line between indoors and out; the open modern floor plan provides an effortless flow for day-to-day living and entertaining. The heart of the home is a great room featuring a grand living area and a dining room sharing a striking contemporary gas fireplace, a well-equipped wet bar, and a kitchen with superior appliances, counter seating, a breakfast nook, a scullery with a walk-in pantry, and plentiful storage.

An office or library and a chic media room share a quiet wing with a powder room and a peaceful, private guest suite with its own walk-in closet, luxurious bath, and mountain-view portal. The owner's suite is a secluded oasis with a lavish bath, two expertly outfitted walk-in closets, and dedicated outdoor spaces. An additional room and bath adjoin the owner's suite and—thanks to a private entrance—could easily serve as an office or in-law suite.

A mudroom with sliding glass doors provides an ideal segue to the spacious three-car garage.



Entry Courtyard/Portal

Amid eye-catching contemporary angles and meticulously positioned grasses, a magnificent wide metal gate opens from the driveway and parking area to a covered walkway and a courtyard with tasteful, colorful landscaping.



Entry Foyer

At the main entry to the residence, a striking pivoting glass door provides a fittingly dramatic introduction to the chic open interiors.



Living Room

The heart of the home is a grand living area with a wraparound modern gas fireplace, a well-equipped wet bar, and a wall of glass framing a cinematic view of the Sangre de Cristo mountains and opening to an outdoor living area and kitchen. Wood ceilings with carefully positioned lighting add a touch of organic warmth.



Main Portal

This enviable outdoor area was designed to make the most of the vast, sweeping vista of the Sangre de Cristos. It includes an alfresco kitchen with a grill and bar seating, spaces for dining, lounging, enjoying the warmth of a fireplace, basking in the sun, or nighttime stargazing.



Kitchen

Just off the living area, the skylit cook's kitchen catches the eye with its contrasting stone and wood surfaces and dramatic stone wall.

Highlights include superior appliances from Wolf and Sub-Zero, counter seating with pendant lights, a breakfast nook with built-in seating and a buffet, and remarkably plentiful storage. A door offers quick and easy access to an alfresco grilling area and kitchen.



Scullery/Butler's Pantry

Behind the main kitchen is a scullery area that allows for discreet plating and prepping. It includes its own sink, additional storage, and a walk-in pantry with built-ins.



Breakfast Area

A breakfast nook with built-in seating and a buffet, and remarkably plentiful storage.



Outdoor Living Space

A door from the Breakfast Area offers quick and easy access to an alfresco grilling area and kitchen.



Dining Room

Flowing directly from the living area is a dining space that shares the fireplace and access to the wet bar. Its own glass doors open to the portal and the breathtaking mountain views.



Wet Bar

Crowned by a curving sculptural ceiling and tucked between the living and dining areas, the wet bar is a thoughtful addition for those who love to entertain. It features a stone wall and bar top, lighted shelving and glass-front cabinetry, an ice maker, a sink, and a beverage chiller.



Hallway

Hallway to Owner's
Primary Suite.



Primary Bedroom Suite

The owner's suite is a secluded oasis that is spacious but not vast. A contemporary gas fireplace adds warmth and charm, while a wall of glass turns the Sangre de Cristos into dynamic art and admits wonderful natural light. Just outside is a peaceful portal and courtyard.



Closets

A hallway off the bedroom and bath offers access to two well-appointed walk-in closets with pocket doors, overhead lighting, and a thoughtful variety of built-ins, including drawers, counter space, and glass-front cabinets.



Portal

Although mere steps from the main portal, this alfresco space is a personal haven for the owner's relaxation and meditative appreciation of the mountains just outside the bedroom.



Bathroom

Remarkably spacious and luxurious, the owner's bright, spa-like bath features multiple vanities with unique lighting and fixtures, two water closets, a roomy glass-door shower with seating, and a glamorous freestanding contemporary soaking tub perfectly positioned for enjoying a mountain outlook. A single glass door opens to the property and an inspiring mountain view.



Bathtub

A glamorous freestanding contemporary soaking tub perfectly positioned for enjoying a mountain outlook.



A single glass door opens to the property and an inspiring mountain view.



Shower

A roomy glass-door shower with seating.



Hallway



Mud Room



Laundry Room

The spacious laundry room is thoughtfully tucked off a hallway leading to the garage and primary bedroom. It features generous countertops, cabinet storage, a sink, and a window admitting cheerful sunlight.



Sitting Room / Bedroom

A sunny hallway with a wall of windows leads from the foyer to this versatile additional room, which is accompanied by a bath and a walk-in closet. It adjoins the primary suite and—thanks to a private entrance via a portal and sliding glass doors—could easily serve as an office or in-law suite.



Closet

This closet, fitted with shelving and hanging racks, is a thoughtful inclusion for guests or long-term storage of household items.



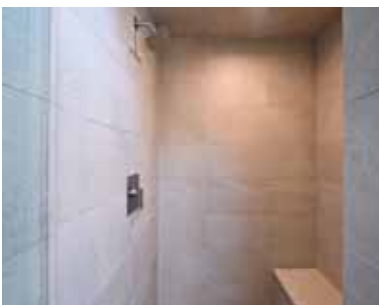
Portal

Sliding glass doors that face the Sangre de Cristos open to a small private portal, providing a private space for enjoying fresh air and views.



Bathroom

Accented with crisp, clean stone and warm wood, this spacious, stylish bath features a lofty skylit ceiling, gentle natural light, a generous vanity, and a walk-in shower with a built-in seat.



Hallway



Office

Secluded off the public spaces via pocket doors is an office or library with a wall of built-in bookshelves, a glass door to a small patio just off the entry courtyard, and a second pocket door that creates separation from the adjoining media room. A convenient powder room is nearby.



Private Garden

A glass door from the Office to a small patio, just off the entry courtyard.



Media Room

Uniquely comfortable and chic, the media room is a quiet space for small-scale relaxation or entertaining. It can be secluded from the remainder of the home via pocket doors and is steps from a powder room.



Powder Room

Hidden discreetly in the hall, away from the entertaining spaces, the powder room is minimally appointed with a striking rectangular stone slab sink and a richly hued wood countertop.



Bedroom

At the end of a very quiet and private wing, well away from the bustling public spaces, this peaceful guest bedroom is a tranquil oasis with its own walk-in closet, luxurious bath, and mountain-view window wall and portal.



Portal

Accessed via glass doors, the guest bedroom's portal offers a private perch for basking in the majesty of the Sange de Cristos and Santa Fe's brilliant blue skies. A pathway connects easily with the main portal.



Bathroom

Visitors will appreciate the convenience and style of their own well-appointed bath, which includes a thoughtful walk-in closet with a variety of built-ins, a spacious vanity, and a roomy tiled shower with seating.



Shower

A roomy tiled shower with seating.



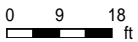
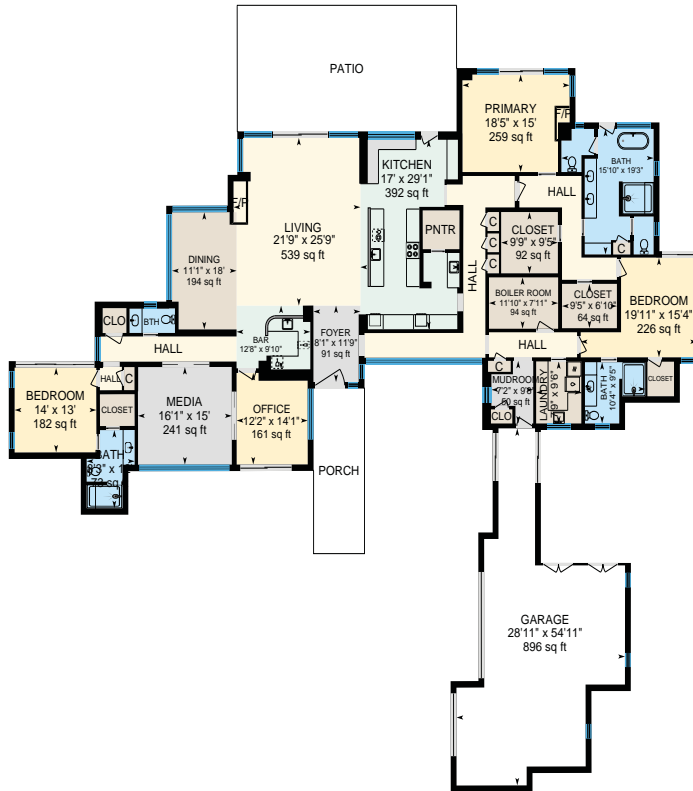
Garage

Roomy and well lit, the home's two-door garage offers space for three cars as well as generous storage space and multiple closets.



Floor Plan

3295 Monte Sereno Dr, Santa Fe, NM



PREPARED: 2024/10/12



White regions are excluded from total floor area in iGUIDE floor plans. All room dimensions and floor areas must be considered approximate and are subject to independent verification.



Site Plan



ARCHITECTURAL SITE PLAN

LOT 52 MONTI SERENO DRIVE
 LOS PANORAMAS ESTATES
 MONTI SERENO SUBDIVISION
 SANTA FE, NM 87506



NO.	REVISIONS

REVISED
 JANUARY 4, 2005

5-2

Property Detail

property summary	
bedrooms	3
bathrooms	1 full 2 three-quarter 1 half
garage	3-car attached
square footage	4,518 ft ²
acreage	1.34
year built	2023
builder	dressel construction
style	contemporary, single level
roof	flat, foam
construction	frame, stucco
foundation	slab
heating system	gas natural
heating distribution	forced air
cooling system	refrigerator central
cooling distribution	forced air
flooring	concrete, tile, wood
gas	natural
water	city
electric	public
sewage	city
taxes	\$7,081.08 in 2023 \$38,063.56 estimated taxes
subdivision	monte sereno
hoa fees	\$1,825/annually
mls number	202404214

No representations or warranties either express or implied are made as to the accuracy of the information herein or with respect to the usability, feasibility or condition of the property. Subject to change, sale or withdrawal without prior notice of any kind.