



3114 Village Drive, Lot 25

Knowing Santa Fe

\$179,000

Customary Great Views in Monte Sereno

As the northern most lots located in the City of Santa Fe, these home sites enjoy the customary great views in Monte Sereno, as well as the full accompaniment of city utilities - water, sewer, gas, electric, cable w/ fiber optic super fast speed, all buried in the paved streets. Zip into town by the newly created 2nd entrance to Monte Sereno via the Santa Fe Opera frontage road and 84/285. Some lots have views that sweep north from the Sangre de Cristo Mountains to the Badlands to the north. Call today for a private tour.



John Rigatti
Tim Van Camp

seller's representatives

john 505.984.5141
tim 505.984.5118

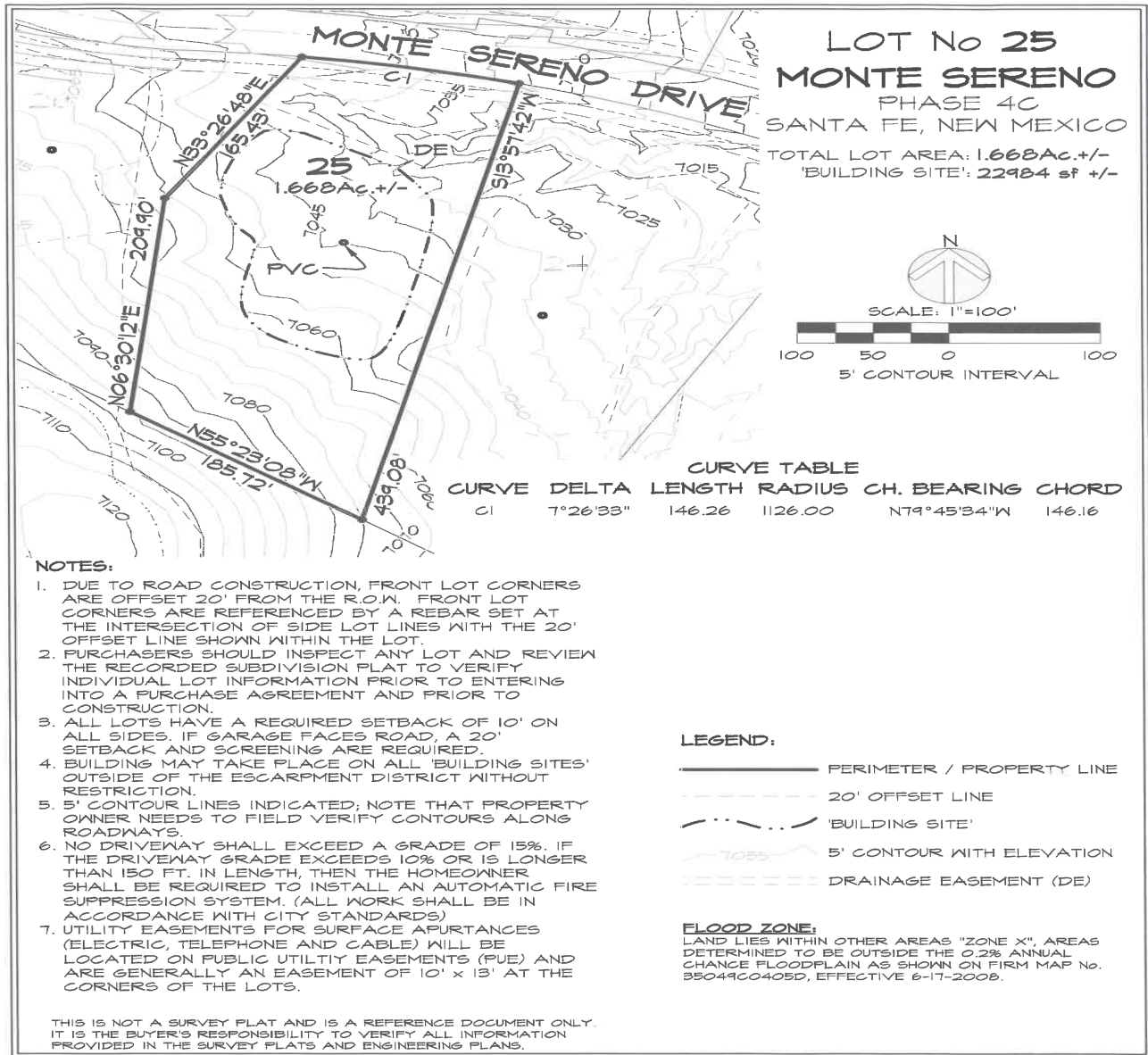
231 Washington Ave.
Santa Fe, NM 87501
505.988.8088

info@knowingsantafe.com
<http://www.knowingsantafe.com>

property summary

| | |
|--------------|--------------------|
| acreage | 1.668 acres |
| electric | public |
| sewage | city |
| water supply | city |
| taxes | \$3,673.07 in 2024 |
| hoa fees | \$1,850/annually |
| mls number | 202405123 |

Sotheby's
INTERNATIONAL REALTY



No representations or warranties either express or implied are made as to the accuracy of the information herein or with respect to the usability, feasibility or condition of the property. Subject to change, sale or withdrawal without prior notice of any kind.