



3114 Village Drive, Lot 25

Knowing Santa Fe

\$179,000

Customary Great Views in Monte Sereno

Discover the northernmost lots in the City of Santa Fe, located in the scenic Monte Sereno community. These homesites boast spectacular views of the Sangre de Cristo Mountains, complemented by all city utilities-water, sewer, gas, electric, and fiber optic cable-neatly buried beneath paved streets.

Experience convenient access to downtown Santa Fe via the new second entrance to Monte Sereno, through the Santa Fe Opera frontage road and Highway 84/285. Some lots offer sweeping vistas from the Sangre de Cristo Mountains to the Badlands in the north. Call today for a private tour.

John Rigatti
Tim Van Camp

seller's representatives

john 505.984.5141
tim 505.984.5118

231 Washington Ave.
Santa Fe, NM 87501
505.988.8088

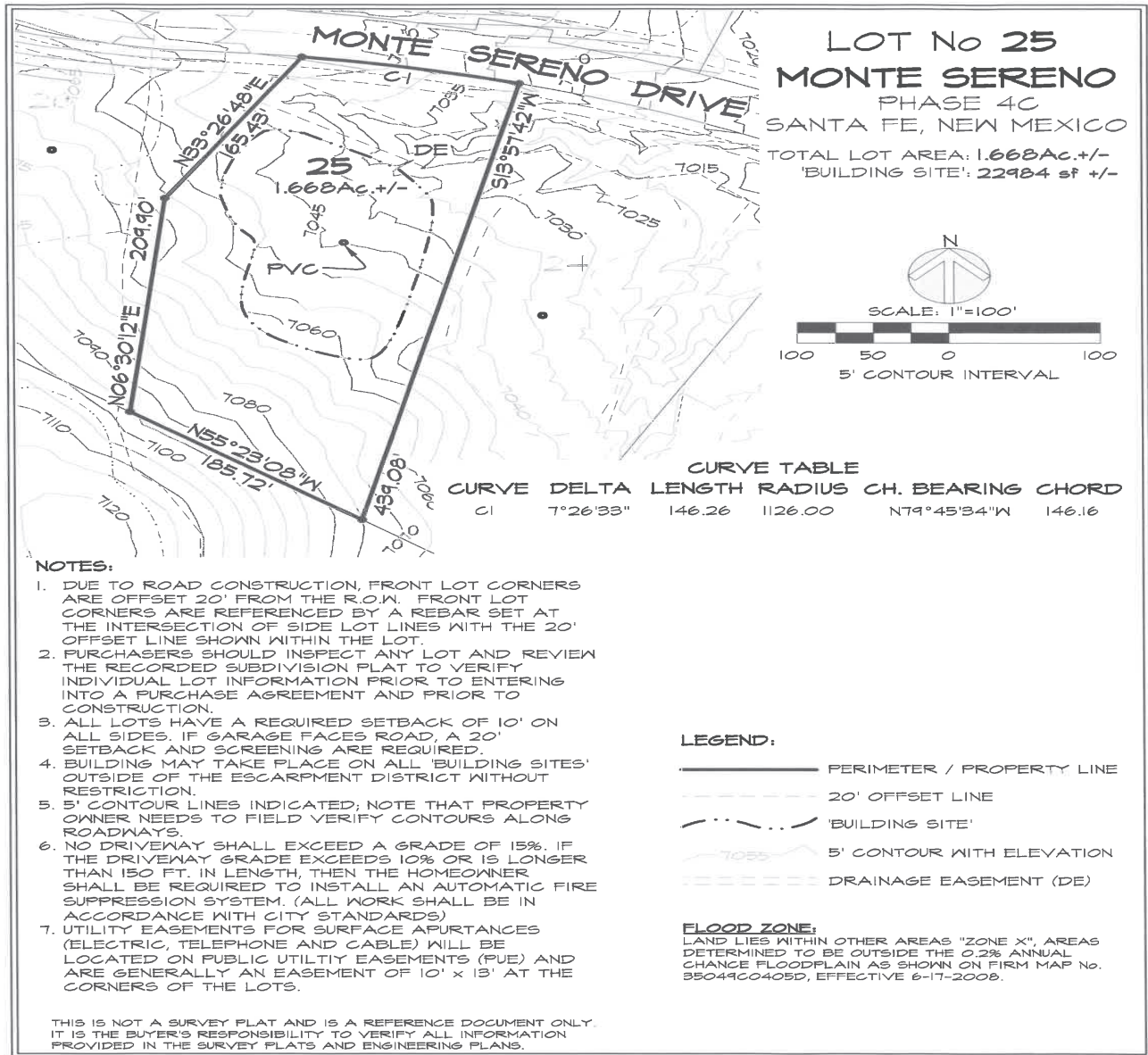
info@knowingsantafe.com
<http://www.knowingsantafe.com>



property summary

acreage	1.668 acres
electric	public
sewage	city
water supply	city
taxes	\$3,673.07 in 2024
hoa fees	\$1,850/annually
mls number	202405123

Sotheby's
INTERNATIONAL REALTY



No representations or warranties either express or implied are made as to the accuracy of the information herein or with respect to the usability, feasibility or condition of the property. Subject to change, sale or withdrawal without prior notice of any kind.