



# 3118 Village Drive, Lot 27

Knowing Santa Fe

\$199,000

## Amazing Views in Monte Sereno

As the northern most lots located in the City of Santa Fe, these home sites enjoy the customary great views in Monte Sereno, as well as the full accompaniment of city utilities - water, sewer, gas, electric, cable w/ fiber optic super fast speed, all buried in the paved streets. Zip into town by the newly created 2nd entrance to Monte Sereno via the Santa Fe Opera frontage road and 84/285. Some lots have views that sweep north from the Sangre de Cristo Mountains to the Badlands to the north. Call today for a private tour.

John Rigatti  
Tim Van Camp

seller's representatives

john 505.984.5141  
tim 505.984.5118

231 Washington Ave.  
Santa Fe, NM 87501  
505.988.8088

info@knowingsantafe.com  
<http://www.knowingsantafe.com>

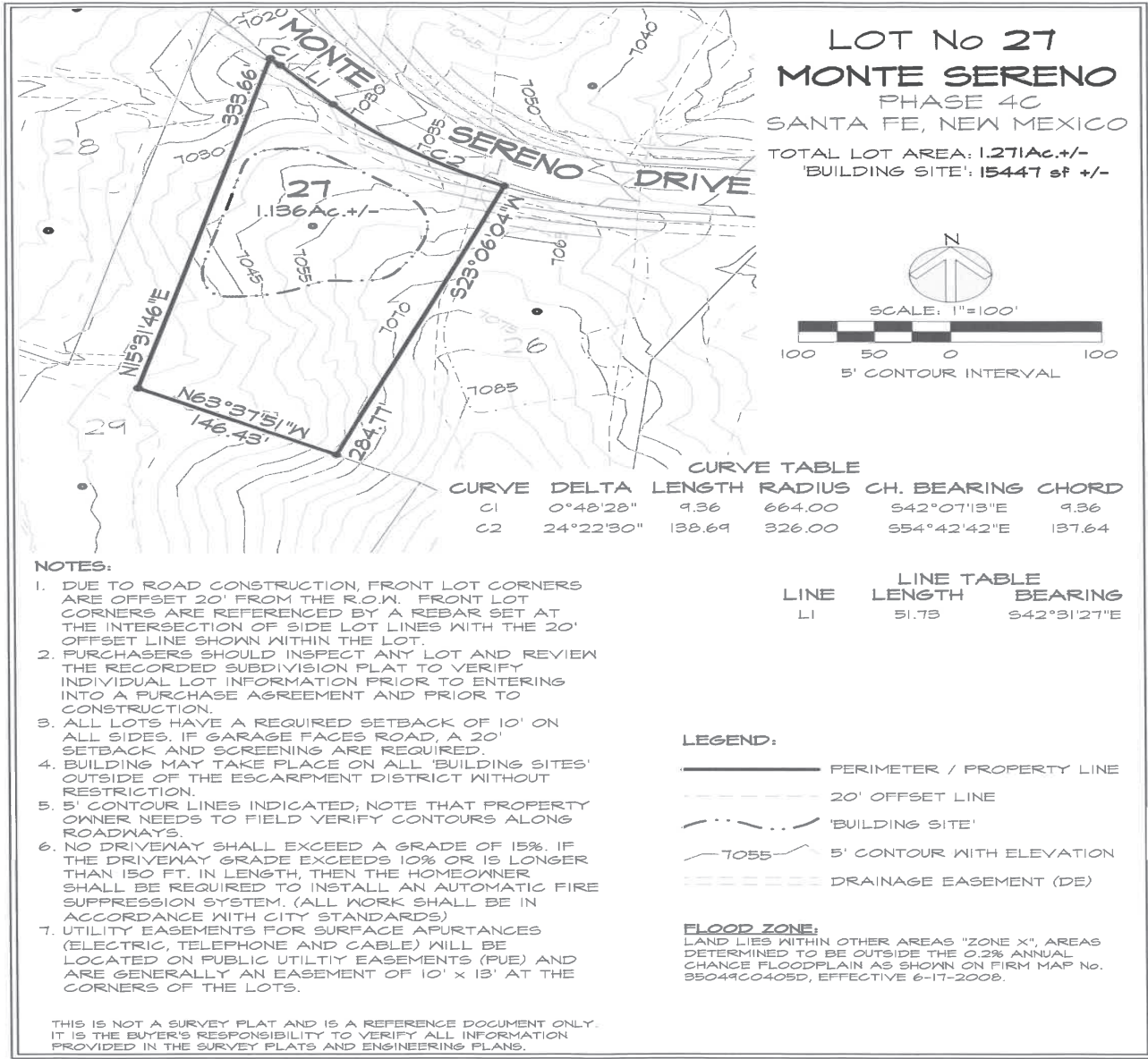


**Sotheby's**  
INTERNATIONAL REALTY

### property summary

acreage	1.136 acres
electric	public
sewage	city
water supply	city
taxes	\$3,366.00 in 2024
hoa fees	\$1,850/annually
mls number	202405124





No representations or warranties either express or implied are made as to the accuracy of the information herein or with respect to the usability, feasibility or condition of the property. Subject to change, sale or withdrawal without prior notice of any kind.